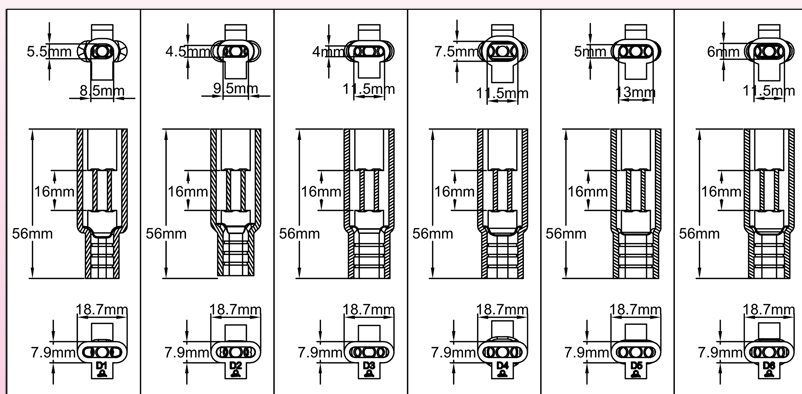
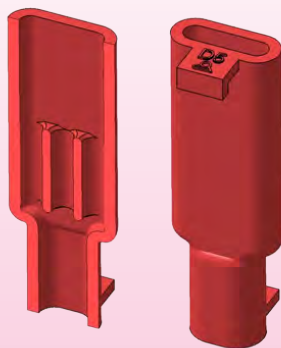
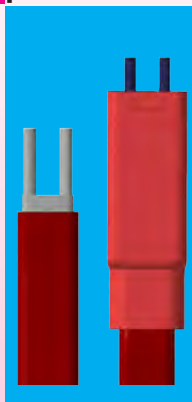


# Connection systems for heating cables with silicone filling

**Silicone connection sleeve type D for constant power heating cable parallel or self-regulating *without* protective and grounding metal braid.**



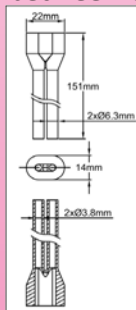
They allow the connection of heating cables on non-heating conventional conductors. When the assembly and filling are performed according to installation instructions, they provide an IP65 seal. Used with AWG15 wires (1.5 mm<sup>2</sup>) FEP insulated 300V, 300mm length (diameter 2.4 mm), equipped with a cable shoe and a tubular crimp terminal. After crimping non-heating wires, the connection to the control box is made with the M20x1.5 accessories with 2.4mm holes.

Average volume of silicone needed for filling: 1 ml

Reference	N°	Hole	Cable gauge
6YTND12085055056	D1	8.5 x 5.5	9 x 6 to 9.5 x 6.5
6YTND22095045056	D2	9.5 x 4.5	10 x 5 to 10.5 x 5.5
6YTND32115040056	D3	11.5 x 4	12 x 4.5 to 12.5 x 5
6YTND42115075056	D4	11.5 x 7.5	12 x 8 to 12.5 x 8.5
6YTND52130050056	D5	13 x 5	13.5 x 5.5 to 14 x 6
6YTND62115060056	D6	11.5 x 6	12 x 6 to 12.5 x 7

Packaging: 10 pieces bag

**Silicone connection sleeve type B for constant power or self-regulating heating cable, *without* non-heating patch, of which heating part between both conductors has been cut off.**



Mounted on conductors of self-regulating cables which sleeve has been removed.

Wire crossing diameter: 4.3 mm

Oblong crossing gauge: 12 x 4 mm

Total length: 150 mm

Mounting: It is recommended to fill the sleeve with liquid silicone before putting it on the conductors. The possible metal braid must be twisted and is not inserted into the sleeve. Requires the use of cable gland packings with two or three slots. Sealing not guaranteed.

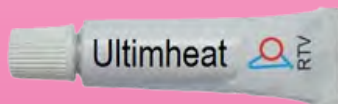
Average volume of silicone needed for filling: 1.4 ml

Reference	6YTNB12120040150
-----------	------------------

Packaging: 10 pieces bag

## Specific accessories for silicone filling

### The filling silicone



Silicone Vulcanizing at room temperature. Very smooth, fills the caps well and without bubbles. Comes with a special nozzle that directs the liquid silicone in the desired location without spilling.

**Color:** red

**Packaging:** 45 ml tube.

**Temperature resistance:** 280°C.

**Vulcanization time at room temperature:** 12 to 24 hours depending on thickness

**Vulcanized hardness:** 35 Shore A

**Volume resistivity:** 4\*10<sup>15</sup> ohms/cm.

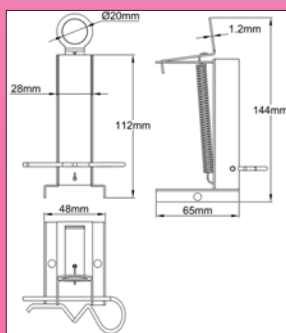
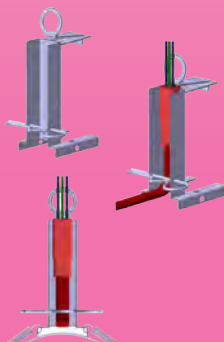
**Displacement:** 150%.

**Breakdown voltage:** 16KV/mm.

To be used on clean surfaces

Reference	6YTMC2000ELH062A
-----------	------------------

### Silicone filling stand



Intended for use with sealed connection sleeves types A, C, D, E, F, G. This stand keeps the pieces vertically while filling the liquid silicone on-site.

Mounts directly during assembly on the pipe, with a plastic clamp or a spring, or is placed on a flat surface. It prevents the reversal of parts during filling. The sleeves and cable ends cling by their taps. Contact us for multiple mounting stand for wiring workshop

Reference	6YTTL002
-----------	----------

Because of permanent improvement of our products, drawings, descriptions, features used on these data sheets are for guidance only and can be modified without prior advice

