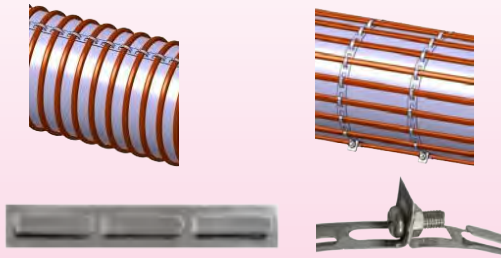


# Specific accessories for heat tracing

## Cables and sensors pipe mounting

### Stainless Steel tape 12.5 mm width

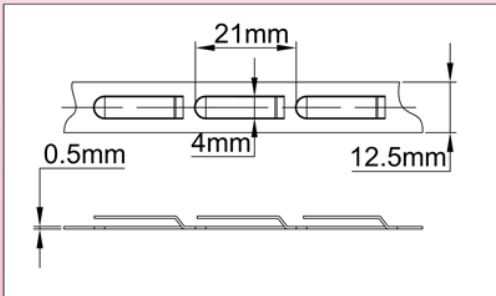


Although more expensive than the traditional aluminum tapes, this solution is perfectly temperature-resistant, and allows fast and durable assembly, and the ability to reposition or replace cables. It can also cost effectively replace the hose serrage. Tape having evenly spaced tabs. These foldable tabs allow to set the heating cables at a constant distance.

#### Mounting:

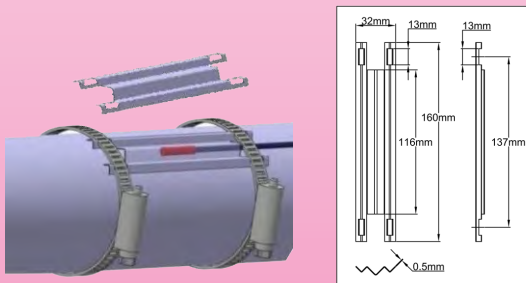
- Longitudinally spot welded on the walls of tanks or pipes.
- On the pipe circumference, by cutting the circumference and tightening in 2 holes with a M4 screw and a nut through the holes of the two bent ends.

Allows the clamping on any pipe diameter.



| Reference     | Description   |
|---------------|---|
| 6YTBT01250304 | Stainless steel 304 tape 304, 50 m reel   |
| 6YTBT01250430 | Stainless steel 430 tape 304, 50 m reel   |
| 6YTBKIT4      | Box of 50 truss head screws 25mm length + M4 nuts, for clamping on the diameter |

### Mounting plate for temperature sensor dia 5 or 6 mm

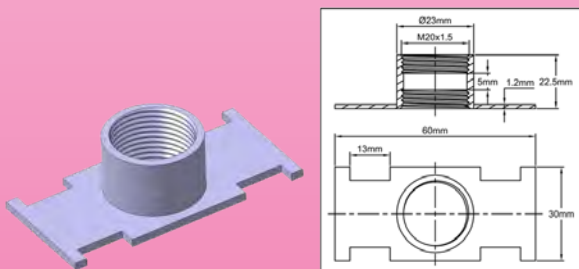


Made of flexible Stainless Steel 304, 0.5mm thickness. Allows the mounting and protection of temperature sensors and thermostat bulbs.

- Its flexibility allows mounting on most pipe diameters.
- Compatible with the Pt100 and NTC sensors shown on page 51

| Reference | 6YTPF160032 |
|-----------|-------------|
|-----------|-------------|

### Pipe mounting plate for M20x1.5 temperature sensor

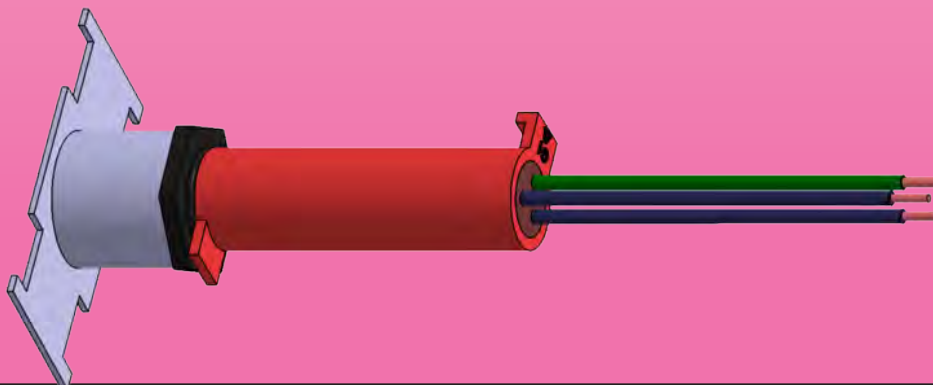


Made of Stainless Steel 304.

- Compatible with the Pt100 and NTC sensors shown on page 102
- Compatible with fixed setting thermostats with M20x1.5 thread shown on page 94

| Reference | 6YTPF060030M20 |
|-----------|----------------|
|-----------|----------------|

### Mounting example of M20 threaded sensor or thermostat



Because of permanent improvement of our products, drawings, descriptions, features used on these data sheets are for guidance only and can be modified without prior advice

