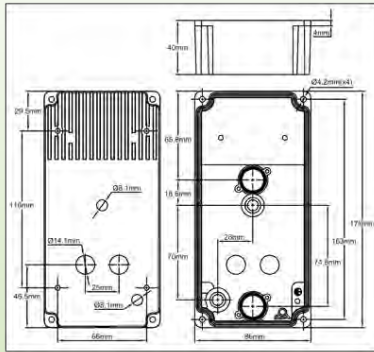
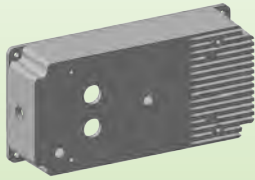
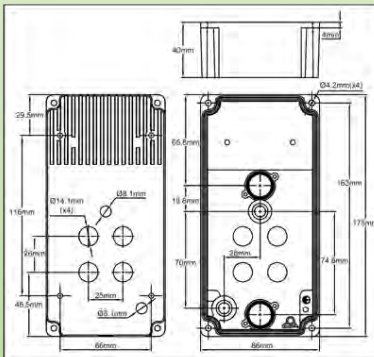
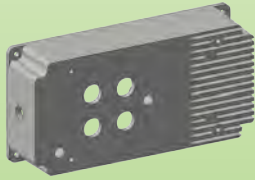


Complementary boxes for finned heaters

Kit for one or two finned heaters, with 25mm pitch



One heating element model



Two heating elements model

Mounting :

- Has 4 tapped holes on the rear support face for mounting either side brackets (see standard plastic or stainless steel brackets), or M4 screws, which allows to put it on a wall or a frame, with the finned heating elements through the wall.

Control and safety :

- Includes a 10 mm dia. hole plugged with a silicone cap for mounting a temperature limiter with manual reset with M10 bushing.

- Slots for one or two internal disc thermostats (1mm wall) with two M3 holes, 24 mm distance, for use as high limit safety thermostat (see page 130).

Side reset possible if using a manual reset disc thermostat and the manual reset side kit (see page 129).

- Has two ¼ BSPP threads for pockets mounting or stuffing boxes with silicon gasket for temperature sensor or capillary exit (dia 1, 1.5, 3mm) or for dia. 8x10 pockets for thermal fuses.

These holes are usually closed by a screw cap. A thread is located under finned heater fitting for a room temperature sensing device and another one is located above for an high limit thermostat or covering safety thermostat

Power control :

- Includes two internal threaded holes for mounting a 10 to 25A single phase solid state relay

References	Qty of heating elements
Y400000D	1
Y400000E	2

Heating elements not included

Example of mounting with a pocket and two finned heating elements

