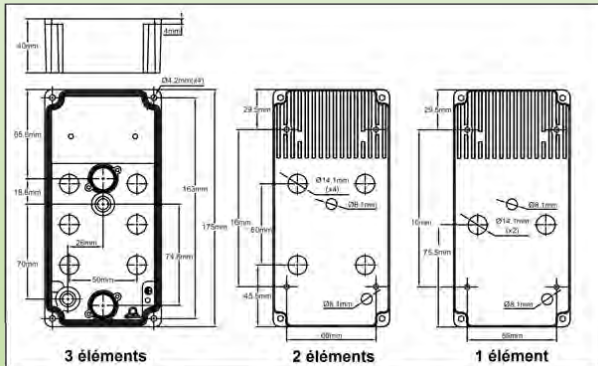
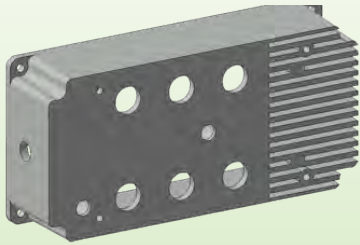


Aluminum additional box for air duct heater, for mounting on circular, rectangular or square pipes



Easy implementation :

The mounting design allows installation on circular pipes or flat surfaces with simple adapters which are mounted on the threaded holes in the aluminum case (see hereunder). Enables to preheat the air blown inside ventilation ducts. Used in heating and ventilation of industrial or commercial premises. Can be used as an accessory for duct fan, or on air duct heater on plenum air distribution terminals.

Controls and safety :

- Two pre-drilled blind holes for disc thermostats with extended flange brackets mounting, for temperature control and high limit manual reset (see pages 129 and 130).

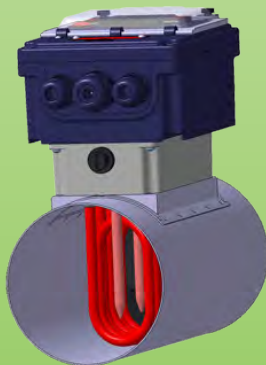
- Two ¼ BSPP threads for temperature sensors or capillaries. These holes are usually sealed with screw cap.

Example: the 6 holes drilling allows the use of 3 double pin or M shaped heating elements inside a dia. 125 mm pipe, or inside a 125 x 125 mm square pipe.

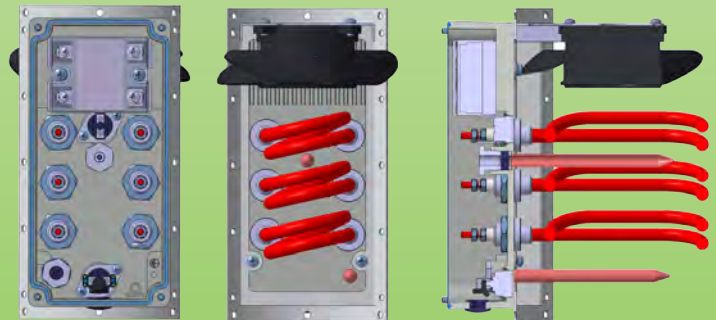
Reference	Description
Y400000F	2 holes dia. 14mm , 50mm pitch
Y400000G	4 holes dia. 14mm , 50mm pitch
Y400000H	6 holes dia. 14mm , 50mm pitch

Heating elements not included

Mounting example on duct with ferrule adapter

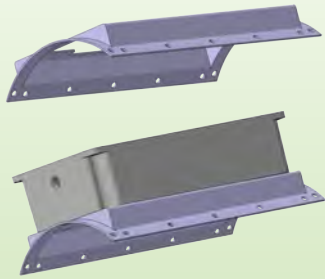


Mounting example on air duct with adapter

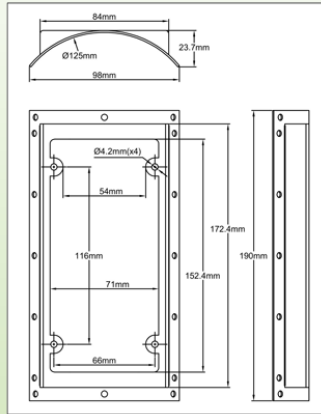


Additional boxes for air heaters and ventilation

Air ducts adapters



Mounting on complementary aluminum box backside



Model for diameter 125mm air duct

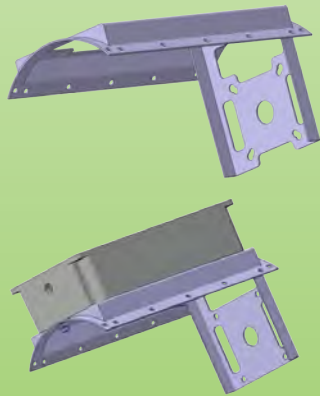
These adapters enable to mount heating elements in air ducts

They are mounted on the backside of the aluminum complementary box with 4 M4 screws.

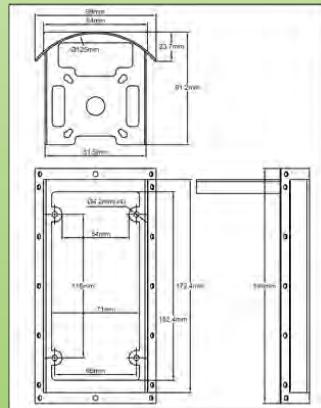
The kit does not include the air duct and the heating elements.
Assembly: easy to make on standard ducts by drilling a 82 x 174 mm hole on the ferrule (projective plane).

Reference	Description
6YEAVF000P	Flat surface mount
6YEAVD125P	Dia 125 pipe mount
6YEAVD160P	Dia 160 pipe mount
6YEAVD200P	Dia 200 pipe mount
6YEAVD250P	Dia 250 pipe mount
6YEAVD315P	Dia 315 pipe mount
6YEAVD400P	Dia 400 pipe mount
6YEAVD450P	Dia 450 pipe mount
6YEAVD500P	Dia 500 pipe mount
6YEAVD630P	Dia 630 pipe mount

Adapters for air ducts, with fan mounting bracket



Mounting on the rear side of a complementary aluminum box



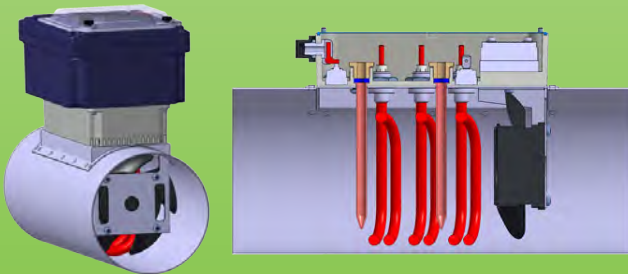
These adapters allow mounting of heating elements and a fan in an air duct.

They are mounted on the rear side of the aluminum housing by four M4 screws.

Fan, air duct and heating elements are not included in the kit.
Assembly: easy to make on standard ducts by drilling a 82 x 174 mm hole on the ferrule (projective plane).

- **Dia. 125 pipes :** bracket for fractional asynchronous motors with external rotor, mounting with four M4 screws on diameter 58mm, 40 to 80W.
- **Dia. 160 and 200 pipes :** bracket for fractional induction motors in compliance with EN 50347, IEC 56 Standard, 4 holes for M5 screws on diameter 65 mm (Power: 0.09 to 0.12 HP @ 3000rpm) motor dia. 116 mm (three phase), 118 mm (single phase)
- **Dia. 250 and 315 pipes :** bracket for fractional induction motors in compliance with EN 50347, IEC 63 Standard, 4 holes for M6 screws on dia. 75 mm (Power: 0.18 to 0.25 HP @ 3000rpm) motor dia. 118 mm (three phase and single phase)
- **Dia. 400, 450 and 500 pipes :** bracket for fractional induction motors in compliance with EN 50347, IEC 85 Standard, 4 holes for M6 screws on dia. 85 mm (Power: 0.37 to 0.55 HP @ 3000rpm) , motor dia. 139 mm (three phase and single phase)

Mounting example



Reference	Pipe diameter
6YEAVD125V	125
6YEAVD160V	160
6YEAVD200V	200
6YEAVD250V	250
6YEAVD315V	315
6YEAVD400V	400
6YEAVD450V	450
6YEAVD500V	500

Other special brackets for customers applications are feasible on demand

Heating elements and fan not included