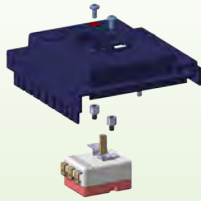


# Accessories for electro thermal complementary boxes

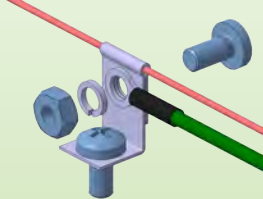
## Height adjustment system of bulb and capillary thermostats



Composed of two M4 metal spacers, it allows using thermostats whose shaft is too long without need to shorten it.

Reference	6YEBMG001
-----------	-----------

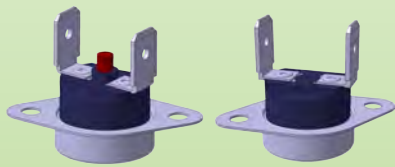
## Grounding system of bulb and capillary thermostats



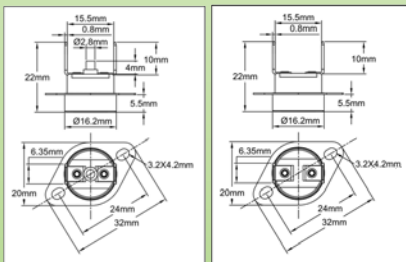
This device allows to connect a ground terminal to a capillary. Insulation sleeve of the capillary must be removed on 10mm. The hole on the side is provided for assembly on a bushing of the mounting boards

Reference	6YEBMG002
-----------	-----------

## Temperature limiters with flange bracket for air heaters and air heating applications



Thermostats with contacts opening on temperature rise, 16A 250VAC rating. The extended flange bracket enables to measure the temperature through the mounting wall and reduce the response time.



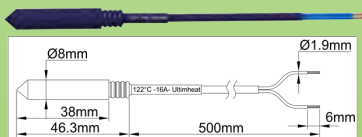
Reference	Opening	Closing
4903EJ06010DL6VF	60°C	50°C
4903EJ07010CL6VF	70°C	60°C
4903EJ08010DL6VF	80°C	70°C
4903EJ09010DL6VF	90°C	80°C
4R05EJ110RMDL6VF	110°C	Manual reset
4R05EJ115RMDL6VF	115°C	Manual reset
4R05EJ120RMDL6VF	120 °C	Manual reset

The Ultimheat production range also features 3 poles disc cut-outs with manual reset. The number of involved applications is however restricted when mounted in the boxes, due to their larger dimensions. Contact our Sales Department for more information.

O-ring and screw kit: See page 94

## Manual reset cut-outs with fail safe: see page 37

## Pre wired thermal fuses, for insertion into pockets with 8.5 mm internal diameter.



**Applications:** protection against overheating of equipments and heating elements.

**Fusible pellet:** organic compound.

**Mechanism:** movable pellet actuated of a spring released by the fusion of the pellet.

**Protection:** insulating silicone cap, dia. 8mm.

### Nominal current rating: 16A 250V

The nominal current rating is the maximum current the fuse can carry without opening or deteriorate when subjected to a temperature known as the "holding temperature" (Tc) for a limited time

**Holding temperature (Tc):** the fuse must not open or be destroyed when subjected to a temperature equal to Tc-6 °C for a period of 168 hours under nominal voltage and current

**Rated functioning temperature (Tf):** It is the opening temperature of the fuse in a calibration oven, when subjected to a current less than 10 mA, when temperature rises at a speed of 0.5 to 1 °C / min. The opening temperature must not be lower than Tm-10 °C or above Tf under these conditions. This is the operating temperature Tf which is printed on the fuse and the protective sheath external of the leads.

**Maximum temperature (Tm):** it is the maximum temperature withstood by the fuse after opening without losing its insulating and mechanical properties.

**Insulation voltage between open contacts:** ≥ 500V

**Insulation resistance between open contacts:** ≥ 0.2 MΩ @ 500V

**Lead lengths:** 500 mm.

**Leads:** FEP 300V primary insulation, 1 mm<sup>2</sup> gauge (AWG18), in a polyolefin sheath.

### In red: standard available temperatures

Reference	Rated functioning temperature °C (Tf)	Holding temperature °C (Th)	Maximum temperature °C (Tm)	Reference	Rated functioning temperature °C (Tf)	Holding temperature °C (Th)	Maximum temperature °C (Tm)
5MA3SPF070F18500	73	45	115	5MA3SPF139F18500	142	114	185
5MA3SPF077F18500	79	52	125	5MA3SPF152F18500	157	127	195
5MA3SPF084F18500	85	57	125	5MA3SPF165F18500	167	130	205
5MA3SPF091F18500	94	66	140	5MA3SPF169F18500	172	145	215
5MA3SPF096F18500	99	71	140	5MA3SPF182F18500	184	156	225
5MA3SPF106F18500	108	77	145	5MA3SPF188F18500	192	164	245
5MA3SPF109F18500	113	84	150	5MA3SPF216F18500	216	189	280
5MA3SPF121F18500	122	94	175	5MA3SPF227F18500	227	190	245
5MA3SPF129F18500	133	101	175	5MA3SPF240F18500	240	190	305

Because of permanent improvement of our products, drawings, descriptions, features used on these data sheets are for guidance only and can be modified without prior advice

