

A technical concept that makes the difference

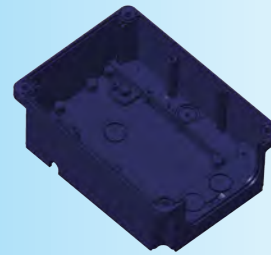
A 2 Housing bases

Y6-Y7



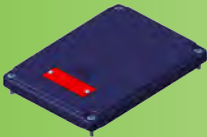
Powder painted aluminum housing base designed for rear mounting applications. Can receive threads from 3/8" up to M77 or 2" for thermostat rods or for immersion heaters. Allows to cover the whole range of these applications

Y8



Fiberglass reinforced black PA66 housing base, designed for wall mounting or stand mounting, with outlets for capillaries or probes, used for general applications, ambiance or distance measurement, with electronic controls or thermostats, can receive many rear mounting accessories, including heat tracing legs. Can also be used as basis for small immersion heaters or surface temperature controls. It has also applications as a junction box base.

B 4 Covers



Black flat in polycarbonate: for connection and junction boxes. The best resistance to UV.



Black flat in powder painted aluminum: for connection and junction boxes. The best mechanical resistance



Transparent flat in polycarbonate: for SSR boxes, for fixed setting thermostat control boxes with internal pilot lights



Opaque with transparent window: for applications requiring frequent access or setting, without any electrical hazard: the terminal block is inaccessible

C 15 Embeddable and compatible temperature control and safety devices (See catalogue Y9 for explosion proof versions)



Single pole bulb and capillary thermostat, temperature ranges up to 320°C



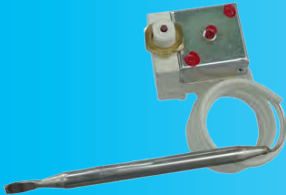
3 pole bulb and capillary thermostat, temperature ranges up to 320°C



Single pole heavy duty bulb and capillary thermostat, temperature ranges up to 750°C



Single pole heavy duty manual reset high limit thermostat, temperature ranges up to 750°C



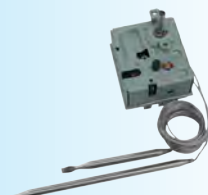
Single pole manual reset high limit manual reset thermostat, fail safe, fixed setting, temperature range up to 320°C



Double pole manual reset high limit manual reset thermostat, fail safe, fixed setting, temperature range up to 170°C



3 pole manual reset high limit manual reset thermostat, fail safe, fixed setting, temperature range up to 170°C



3 pole combination control, with manual reset, temperature ranges up to 320°C



Blind electronic thermostat, temperature ranges up to 300°C. Also available with manual reset



77 x 35 mm single display electronic controller, ON-OFF



48 x 25 mm single display electronic controller, ON-OFF and PID auto-tune, multi sensors, relay and SSR outputs



48 x 48 mm double display electronic controller, ON-OFF and PID auto-tune, multi sensors, relay and SSR outputs

Because of permanent improvement of our products, drawings, descriptions, features used on these data sheets are for guidance only and can be modified without prior advice

