

# Energy regulators, 6 mm shaft, bush mounting: type 35ER

## DIMENSIONS



## TECHNICAL FEATURES

### Main features:

Energy regulators are used to adjust power on electrical heaters. Connected in line with electrical heaters, they provide adjustable cycling sequence, thus adjusting average electrical power

**Housing dimensions:** 50 x 42 x 39 mm (shaft not included)

**Housing material:** high temperature resistant PPS

**Terminals:** 6.3 x 0.8 quick connect

**Adjustment:** dia. 6 mm with 4.8 flat shaft, length 11.4 mm (UK style models with 4.75 mm dia. shaft available on request, MOQ apply)

### Angulation:

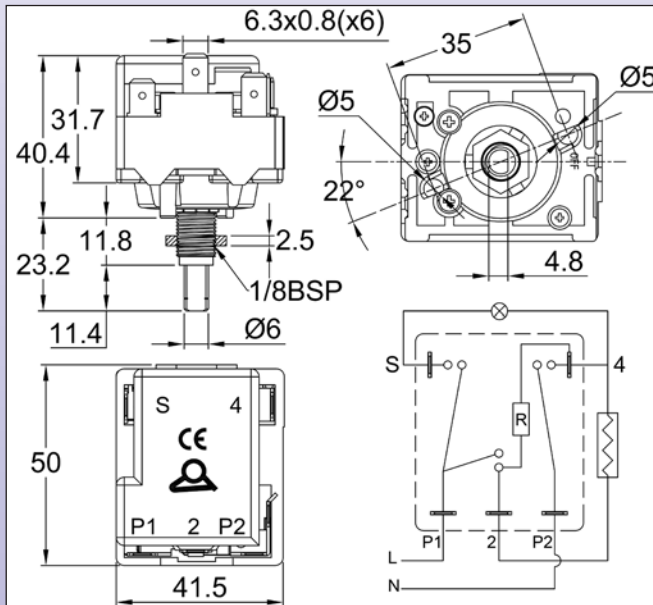
- Mechanical: 360°, with two pole off position at 0°
- Electrical: Min position at 75° angular, Max position at 285° angular. (Other angulation with max at 208.5° available on request, MOQ apply)

**Mounting:** Center ¼ BSPP bush with centering studs. 2 M4, 28 mm distance screws mounting bracket available on request (MOQ apply)

**Rating:** 12A 230V resistive, SPDT+ on off pilot contact. Other contact configuration (SPST, SPDT without pilot, double circuit etc... are available on request, MOQ apply)

**Max ambient temperature:** 125°C/257°F

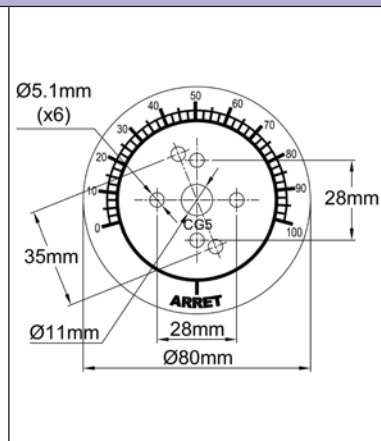
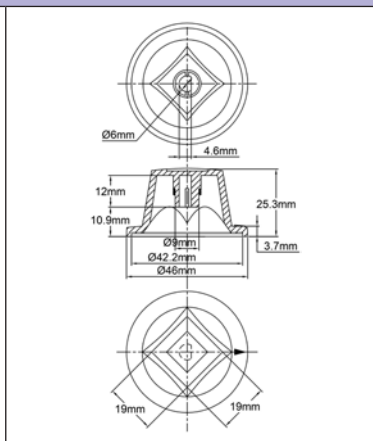
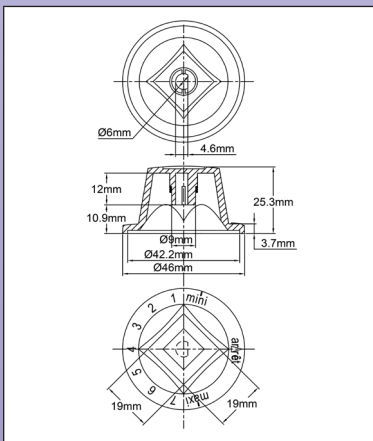
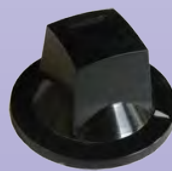
**Approval:** CE



## References

24V	35ER102TF024V
48V	35ER102TF048V
110V	35ER105TF110V
230V	35ER101TF230V
400V	35ER104TF400V

## Knobs and dials



Black polyamid knob with with white printing

Reference 66MD003000071

Black polyamid knob with white arrow, for anodized aluminum dial

Reference 66MF006000001

Anodized aluminum dial with 0-100 printing for arrow knob

Reference 66CG5001