

Immersion heaters connection boxes

Size 8



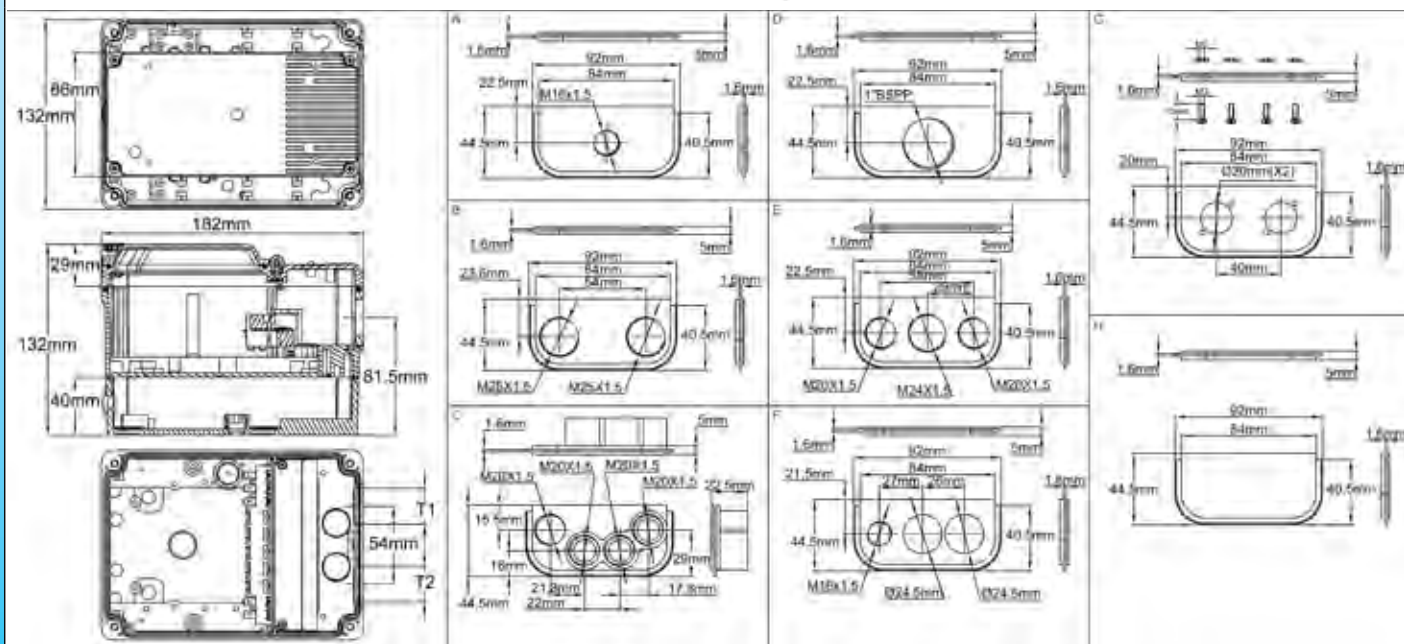
182x130x132 mm Universal

Dimensions: 182x130x132 mm Universal (1st section)

Material: Fiber glass reinforced PA66 and die cast aluminum

Type: *Universal*, unlosable stainless steel fasteners
Many versions of this box size, fully equipped and wired are described in the catalog No. 3, series Y8.

Basic references



Basic references, no fitting holes, cable gland not included*

	Drawing	
1x M16x1.5 thread	A	Y303U1AE00TTOXH1
2x M25x1.5 threads	B	Y303U1BE00TTOXH1
1x M20x105 thread + 3 outputs for flat cables	C	Y303U1CE00TTOXH1
1x 1" thread	D	Y303U1DE00TTOXH1
1x M24x1.5 thread + 2 x M20x1.5 threads	E	Y303U1EE00TTOXH1
2 holes dia 24.5+ 1x M16x1.5 thread	F	Y303U1FE00TTOXH1
2x dia 20 holes for DIN 43650A connectors*	G	Y303U1GE00TTOXH1

* This output is mandatory for models with 2 K thermostats

Because of permanent improvement of our products, drawings, descriptions, features used on these data sheets are for guidance only and can be modified without prior advice





182x130x132 mm Universal

Immersion heaters connection boxes

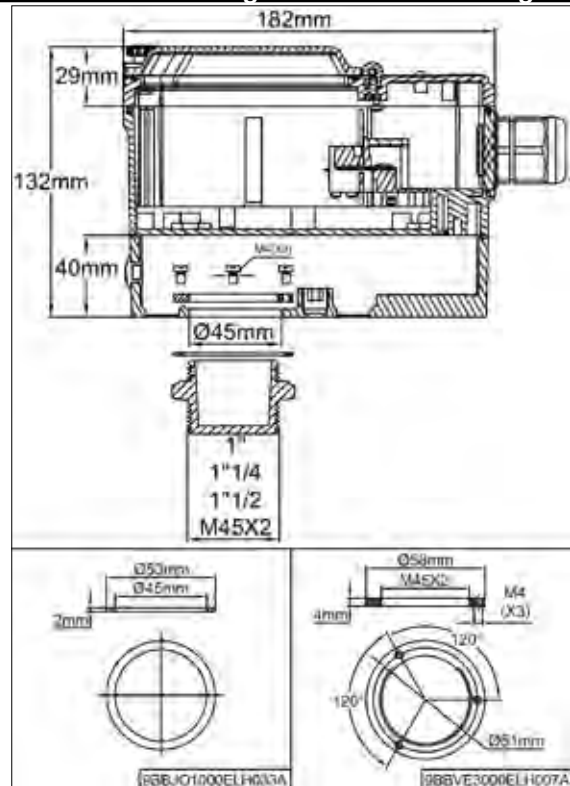
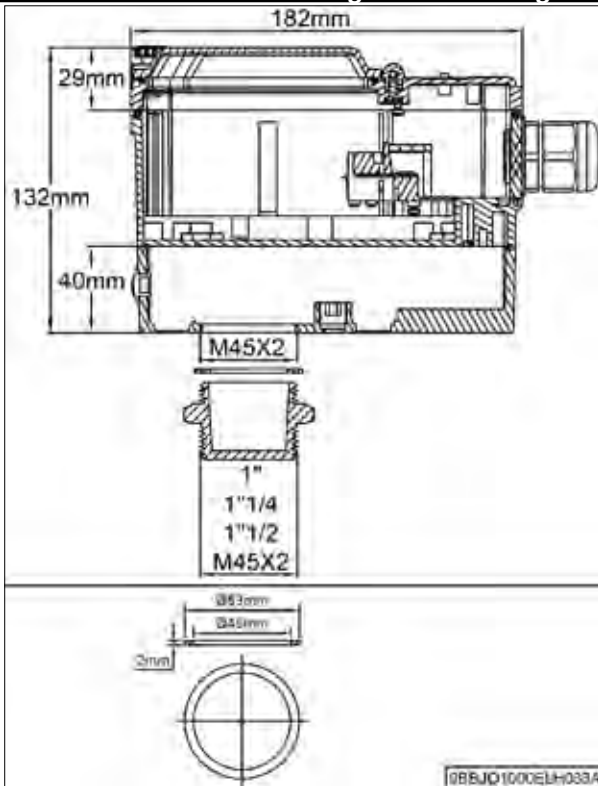
Dimensions: **182x130x132 mm Universal**

(2nd section)

Main fitting configurations

M45 thread for brass fitting direct mounting*

Mobile brass fitting with M45 threaded ring*

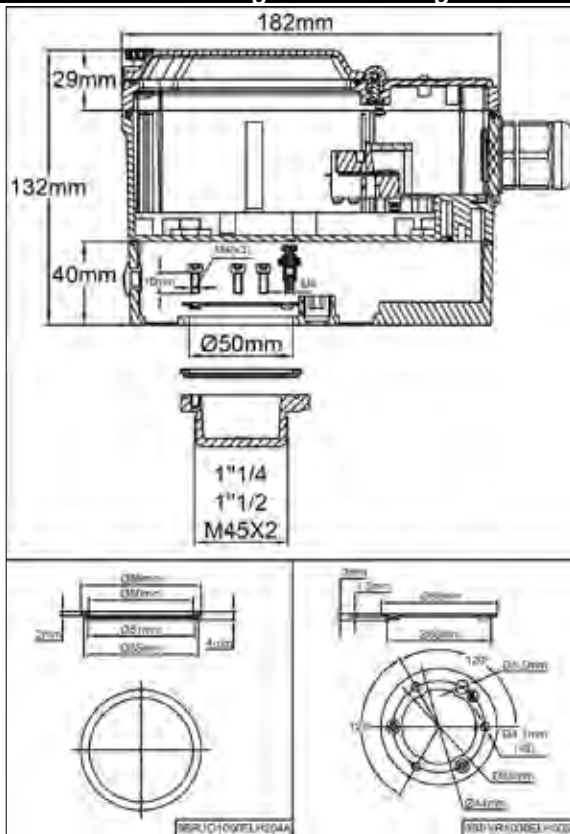
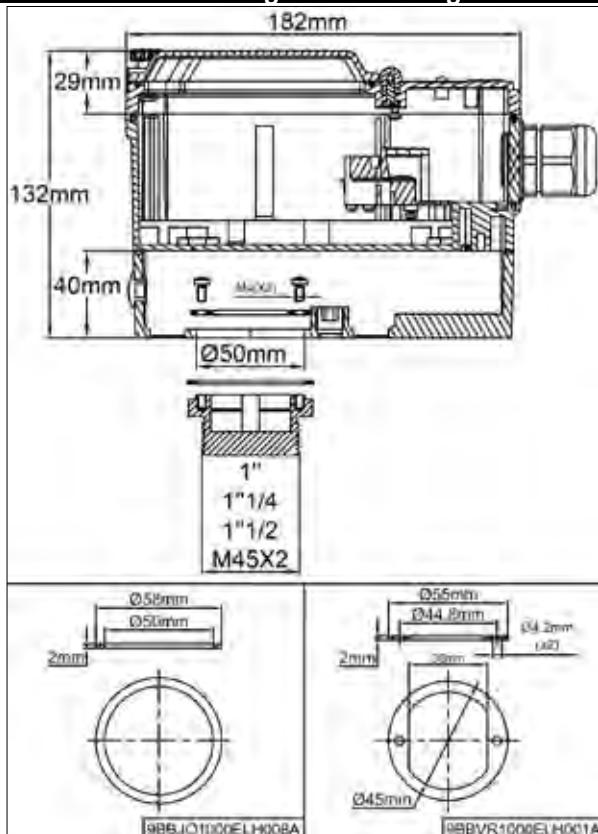


Reference : Replace E00 in the basic reference by E45

Reference : Replace E00 in the basic reference by ER4

Mobile brass fitting with 2 hole ring dia.50*

Mobile brass fitting with 3 hole ring dia.50*



Reference : Replace E00 in the basic reference by E24

Reference : Replace E00 in the basic reference by E34

* References do not include the brass fitting (See accessories at the end of this catalogue)

Because of permanent improvement of our products, drawings, descriptions, features used on these data sheets are for guidance only and can be modified without prior advice



Immersion heaters connection boxes

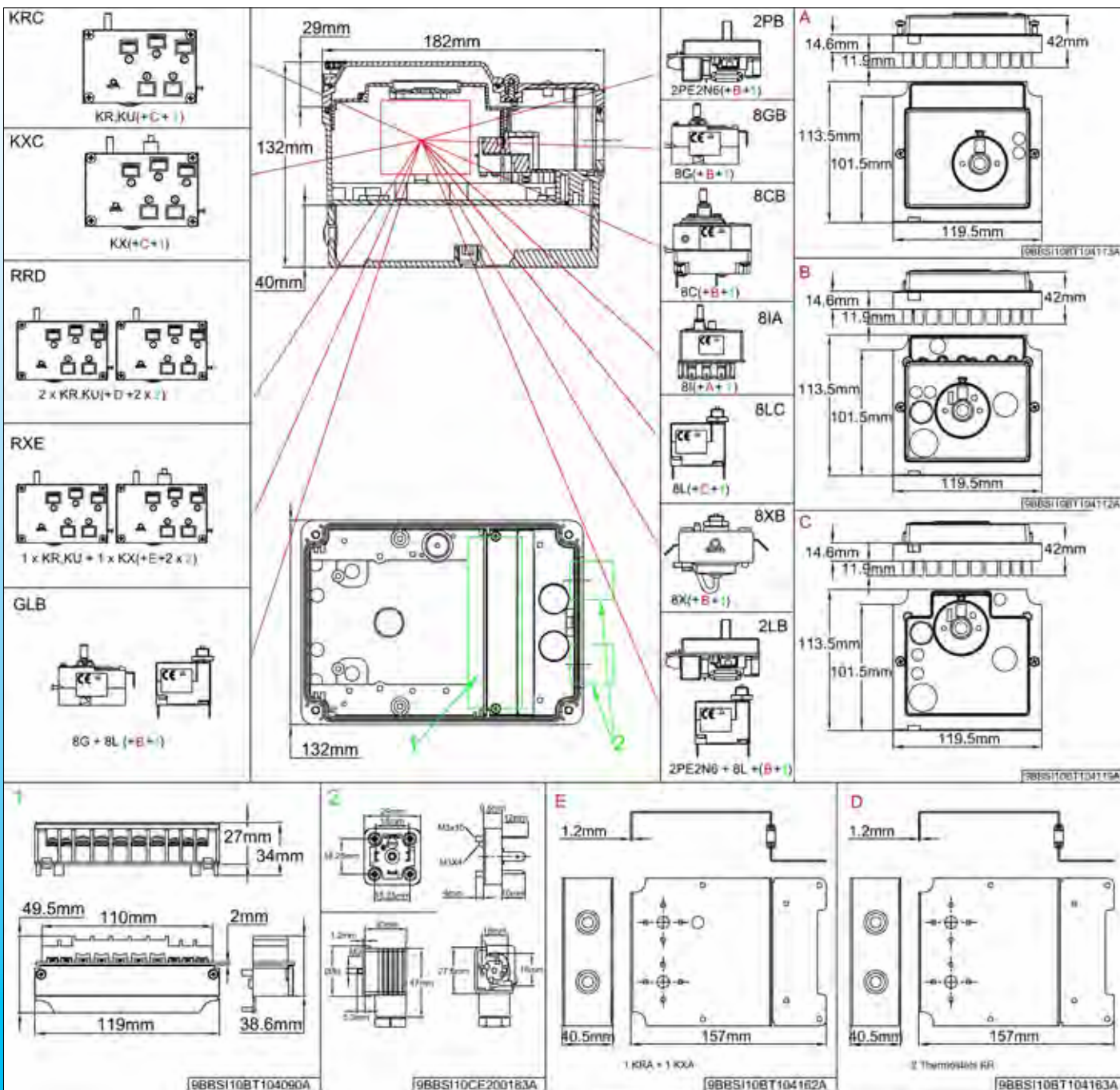
Size 8



Dimensions: **182x132x132 mm Universal**
(3rd section)

Internal accessories: These models can receive thermostats, electronic controls, relays and contactors mounted on internal boards

Thermostat mounting options on internal mounting boards



References : Replace the characters TTO in the basic reference by the 3 characters located in the selected thermostat cell.
Attention : the thermostat and eventually the knob and bezel must be ordered separately, see catalogue N°1 for standard thermostats and catalogue N°4 for explosion proof EX thermostats.

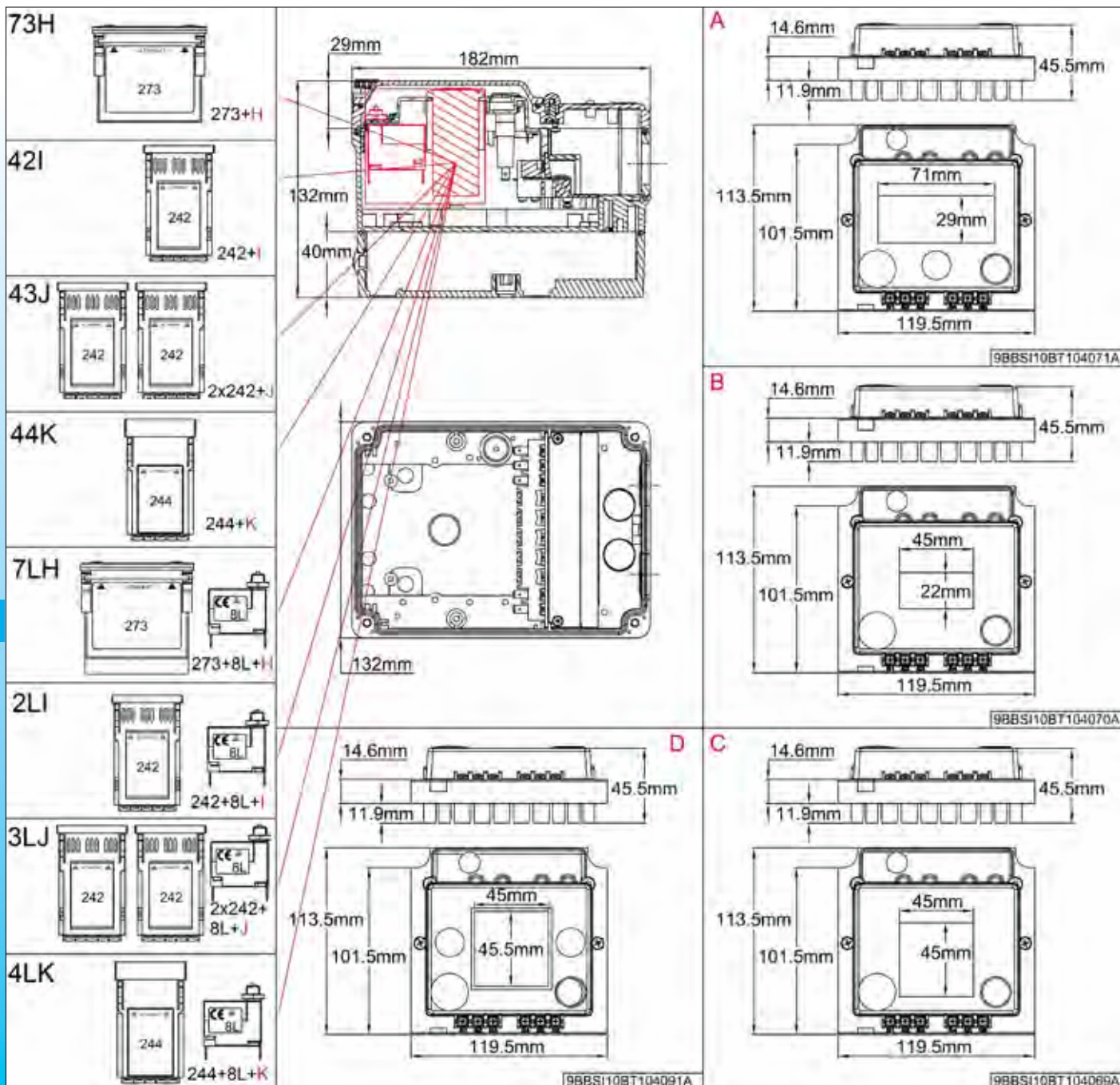
Because of permanent improvement of our products, drawings, descriptions, features used on these data sheets are for guidance only and can be modified without prior advice



Immersion heaters connection boxes

Dimensions: **182x132x144 mm Universal** (4th section)

Electronic control mounting options on internal mounting boards



References : Replace the characters TTO in the basic reference by the 3 characters located in the selected electronic controller cell. **Attention :** Electronic controller must be ordered separately, see catalogue N°3 describing every possible version.

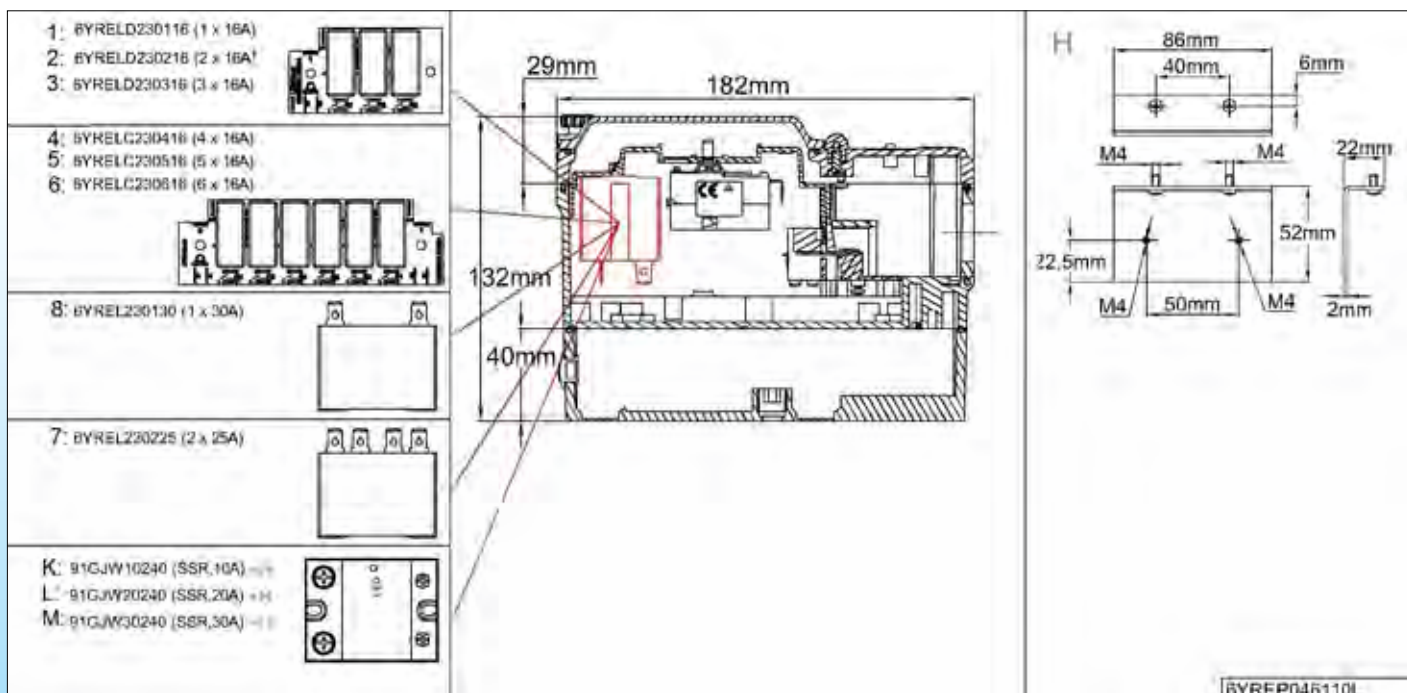
Immersion heaters connection boxes

Size 8



182x130x132 mm Universal

Dimensions: 182x130x132 mm Universal (5th section)
Relay and contactor internal mounting options



References : Replace the character X in the basic reference by the character located in the selected relay cell.

Attention : relays must be ordered separately, [see catalogue N°3 describing every possible version.](#)

Because of permanent improvement of our products, drawings, descriptions, features used on these data sheets are for guidance only and can be modified without prior advice

