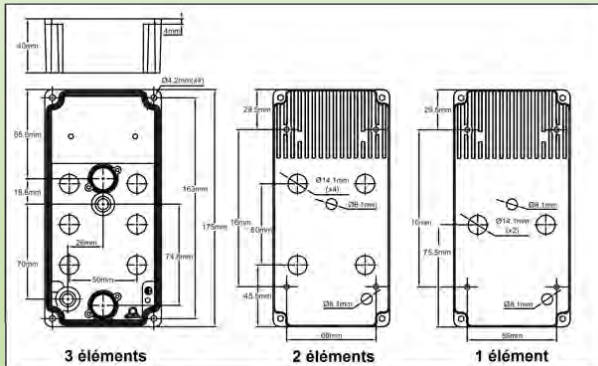
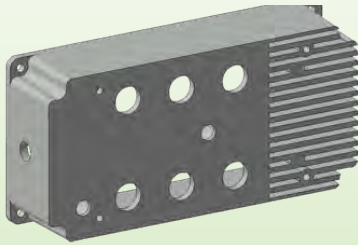


## Aluminum additional box for air duct heater, for mounting on circular, rectangular or square pipes



### Easy implementation :

The mounting design allows installation on circular pipes or flat surfaces with simple adapters which are mounted on the threaded holes in the aluminum case (see hereunder). Enables to preheat the air blown inside ventilation ducts. Used in heating and ventilation of industrial or commercial premises. Can be used as an accessory for duct fan, or on air duct heater on plenum air distribution terminals.

### Controls and safety :

- Two pre-drilled blind holes for disc thermostats with extended flange brackets mounting, for temperature control and high limit manual reset (see pages 129 and 130).

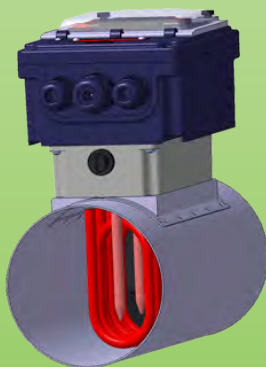
- Two ¼ BSPP threads for temperature sensors or capillaries. These holes are usually sealed with screw cap.

Example: the 6 holes drilling allows the use of 3 double pin or M shaped heating elements inside a dia. 125 mm pipe, or inside a 125 x 125 mm square pipe.

Reference	Description
Y400000F	2 holes dia. 14mm , 50mm pitch
Y400000G	4 holes dia. 14mm , 50mm pitch
Y400000H	6 holes dia. 14mm , 50mm pitch

Heating elements not included

### Mounting example on duct with ferrule adapter



### Mounting example on air duct with adapter

