

5

ULTIMHEAT®



PRESSURE SWITCHES

Air switches
Positive Pressure switches
Vacuum pressure switches
Differential pressure switches

Elastomer membrane types, medium pressure range
(20 to 1500 mbar)

The professional solution: an extended, rational, and consistent range of products

Technical catalogue for R&D department

Edition 31/05/2013



E-Mail: info@ultimheat.com Web: www.ultimheat.com

Alphabetical list

Reference	Page
3 poles pressure switches, high electrical rating, snap action contact, adjustable set point, metal fittings	29
Absolute pressure	65
Air buttons	58
Barometric pressure	65
Differential pressure	65
Double pole air switches, snap action, high electrical rating, plastic fittings	57
Double pole pressure switches, high electrical rating, snap action contact, adjustable set point, metal fittings	28
Foot air pedals	59
IP65, differential pressure switches, Slow action contact plastic fitting	49
Miniature differential pressure switches for conventional wiring with 6.3 QC terminals, Slow action contact, plastic fitting	48
Miniature low differential pressure switches for 5 mm pitch printed circuit boards, Slow action contact	47
Miniature pressure switches for conventional wiring with 6.3 QC terminals, Slow action contact, NO contacts, plastic fitting	19
Miniature pressure switches for conventional wiring with 6.3 QC terminals, Slow action contact, NC contacts, plastic fitting	20
Miniature pressure switches for conventional wiring with 6.3 QC terminals, Slow action contact, NO contacts, metal fitting	21
Miniature pressure switches for conventional wiring with 6.3 QC terminals, Slow action contact, NC contacts, metal fitting	22
Miniature pressure switches for printed circuit boards, Slow action contact NO contacts, 6.35 pitch, plastic fittings	13
Miniature pressure switches for printed circuit boards, Slow action contact, NO contacts, 6.35 pitch, metal fittings	14
Miniature pressure switches for printed circuit boards, Slow action contact, NO contacts, 5 mm pitch, plastic fittings	15
Miniature pressure switches for printed circuit boards, Slow action contact, NC contacts, 5 mm pitch, plastic fittings	16
Miniature pressure switches for printed circuit boards, Slow action contact, NO contacts, 5 mm pitch, metal fittings	17
Miniature pressure switches for printed circuit boards, Slow action contact, NC contacts, 5 mm pitch, metal fittings	18
Miniature pressure switches, high electrical rating, double pole snap action contact, Plastic fittings	25
Miniature pressure switches, high electrical rating, double pole snap action contact, Metal fittings	26
Miniature pressure switches, high electrical rating, single pole snap action contact, Plastic fittings	23
Miniature pressure switches, high electrical rating, single pole snap action contact, Metal fittings	24
Miniature single pole air switches, slow action contact, for printed circuits boards, plastic fittings, NO contact, 6.35 mm pitch	53
Miniature single pole air switches, slow action contact, for printed circuits boards, plastic fittings, NO contact, 5 mm pitch	54

Reference	Page
Miniature vacuum pressure switches for conventional wiring with 6.3 QC terminals, Slow action contact, NO contact, plastic fittings	37
Miniature vacuum pressure switches for conventional wiring with 6.3 QC terminals, Slow action contact, NC contact, plastic fittings	38
Miniature vacuum pressure switches for conventional wiring with 6.3 QC terminals, Slow action contact, NO contact, metal fittings	39
Miniature vacuum pressure switches for printed circuit boards, Slow action contact, NO contacts, 5 mm pitch, plastic fittings	33
Miniature vacuum pressure switches for printed circuit boards, Slow action contact, NC contacts, 5 mm pitch, plastic fittings	34
Miniature vacuum pressure switches for printed circuit boards, Slow action contact, NO contacts, 5 mm pitch, metal fittings	35
Miniature vacuum pressure switches for printed circuit boards, Slow action contact, NC contacts, 5 mm pitch, metal fittings	36
Miniature vacuum pressure switches for conventional wiring with 6.3 QC terminals, Slow action contact, NC contact, metal fittings	40
Miniature vacuum pressure switches, double pole snap action contact, high electrical rating, Plastic fittings	43
Miniature vacuum pressure switches, double pole snap action contact, high electrical rating, Metal fittings	44
Miniature vacuum pressure switches, Single pole snap action contact, high electrical rating, Plastic fittings	41
Miniature vacuum pressure switches, Single pole snap action contact, high electrical rating, Metal fittings	42
Operating principle, Differential pressure switch, creep action type	5
Operating principle, Negative pressure, creep action type	5
Operating principle, Negative pressure, snap action type	5
Operating principle, Positive pressure, creep action type	5
Operating principle, Positive pressure, snap action type	5
Plastic and metalnuts	63
Positive pressure	65
Pressure switcheshousings	63
Pressure switchesmouting tees	64
Pressure units	65
PVC flexible air tubes	63
Single pole air switches, slow action contact, conventional wiring with 6.3 QC terminals, plastic fittings	55
Single pole air switches, snap action, high electrical rating, plastic fittings	56
Single pole pressure switches, high electrical rating, snap action contact, adjustable set point, metal fittings, IP65 housing	27
Tube lockingnuts	63



Alphabetical and references tables

References list

Reference	Page	Reference	Page	Reference	Page	Reference	Page
ZE2X2WF105000009	53	ZF2X27LG05000000	35	ZP153WU100000009	56	ZT252ZU50A000000	43
ZE2X2WFG05000008	53	ZF2X28EA05000000	37	ZP173IU600000006	56	ZT2B2U60C0000000	44
ZE2X2WFG05000009	53	ZF2X28EG05000000	37	ZP173IU600000007	56	ZT2B3U60C0000000	44
ZE2X2WL105000008	54	ZF2X28L105000000	33	ZP173IU600000008	56	ZT2B7U60C0000000	44
ZE2X2WL105000009	54	ZF2X28LG05000000	33	ZP173IU600000009	56	ZT2B8U60C0000000	43
ZE2X2WLG05000008	54	ZF2X29EA05000000	39	ZP173WU600000008	56	ZT2B9U60C0000000	44
ZE2X2WLG05000009	54	ZF2X29EG05000000	39	ZP173WU600000009	56	ZT2BAU60C0000000	43
ZE2X2ZF105000000	13	ZF2X29L105000000	35	ZQ2722U50A500000	24	ZT2BCU60C0000000	44
ZE2X2ZFG05000000	13	ZF2X29LG05000000	35	ZQ2723U50A500000	24	ZT2BU60C0000000	44
ZE2X2ZL105000000	15	ZF2X2AEA05000000	37	ZQ2727U50A500000	24	ZT2BLU60C0000000	44
ZE2X2ZL105000000	15	ZF2X2AEG05000000	37	ZQ2728U50A500000	23	ZT2BMU60C0000000	43
ZF2X12EA05000000	40	ZF2X2AL105000000	33	ZQ2729U50A500000	24	ZT2BPU60C0000000	44
ZF2X12EG05000000	40	ZF2X2ALG05000000	33	ZQ272AU50A500000	23	ZT2BQU60C0000000	43
ZF2X12L105000000	36	ZF2X2CEA05000000	39	ZQ272CU50A500000	24	ZT2BRU60C0000000	44
ZF2X12LG05000000	36	ZF2X2CEG05000000	39	ZQ272JU50A500000	24	ZT2BRU60C0000000	44
ZF2X13EA05000000	40	ZF2X2CL105000000	35	ZQ272LU50A500000	24	ZT2BTU60C0000000	43
ZF2X13EG05000000	40	ZF2X2CLG05000000	35	ZQ272MU50A500000	23	ZT2BZU60C0000000	43
ZF2X13L105000000	36	ZF2X2IEA05000006	55	ZQ272PU50A500000	24	ZV103IU500000006	57
ZF2X13LG05000000	36	ZF2X2IEA05000007	55	ZQ272QU50A500000	23	ZV103IU500000007	57
ZF2X17EA05000000	40	ZF2X2IEG05000006	55	ZQ272RU50A500000	24	ZV103IU500000008	57
ZF2X17EG05000000	40	ZF2X2IEG05000007	55	ZQ272SU50A500000	24	ZV103UU500000009	57
ZF2X17L105000000	36	ZF2X2IEA05000000	39	ZQ272TU50A500000	23	ZV103WU500000008	57
ZF2X17LG05000000	36	ZF2X2IEG05000000	39	ZQ272ZU50A500000	23	ZV103WU500000009	57
ZF2X18EA05000000	38	ZF2X2JL105000000	35	ZQ2K22U1UH000000	24	ZV153IU100000006	57
ZF2X18EG05000000	38	ZF2X2JLG05000000	35	ZQ2K22U6UH000000	24	ZV153IU100000007	57
ZF2X18L105000000	34	ZF2X2LEA05000000	39	ZQ2K23U1UH000000	24	ZV153UU100000008	57
ZF2X18LG05000000	34	ZF2X2LEG05000000	39	ZQ2K23U6UH000000	24	ZV153UU100000009	57
ZF2X19EA05000000	40	ZF2X2LL105000000	35	ZQ2K27U1UH000000	24	ZV153WU100000008	57
ZF2X19EG05000000	40	ZF2X2LLG05000000	35	ZQ2K27U6UH000000	24	ZV153WU100000009	57
ZF2X19L105000000	36	ZF2X2MEA05000000	37	ZQ2K28U1UH000000	23	ZV173IU600000006	57
ZF2X19LG05000000	36	ZF2X2MEG05000000	37	ZQ2K28U6UH000000	23	ZV173IU600000007	57
ZF2X1AEA05000000	38	ZF2X2ML105000000	33	ZQ2K29U1UH000000	24	ZV173UU600000008	57
ZF2X1AEG05000000	38	ZF2X2MLG05000000	33	ZQ2K29U6UH000000	24	ZV173UU600000009	57
ZF2X1AL105000000	34	ZF2X2PEA05000000	39	ZQ2K2AU1UH000000	23	ZV173WU600000008	57
ZF2X1ALG05000000	34	ZF2X2PEG05000000	39	ZQ2K2AU6UH000000	23	ZV173WU600000009	57
ZF2X1CEA05000000	40	ZF2X2PL105000000	35	ZQ2K2CU1UH000000	24	ZW2722U50A500000	26
ZF2X1CEG05000000	40	ZF2X2PLG05000000	35	ZQ2K2CU6UH000000	24	ZW2723U50A500000	26
ZF2X1CL105000000	36	ZF2X2QEA05000000	37	ZQ2K2JU1UH000000	24	ZW2727U50A500000	26
ZF2X1CLG05000000	36	ZF2X2QEG05000000	37	ZQ2K2JU6UH000000	24	ZW2727U50A500000	25
ZF2X1EA05000000	40	ZF2X2QL105000000	33	ZQ2K2LU1UH000000	24	ZW2729U50A500000	26
ZF2X1EG05000000	40	ZF2X2QLG05000000	33	ZQ2K2LU6UH000000	24	ZW272AU50A500000	25
ZF2X1L105000000	36	ZF2X2REA05000000	39	ZQ2K2MU1UH000000	23	ZW272CU50A500000	26
ZF2X1LG05000000	36	ZF2X2REG05000000	39	ZQ2K2MU6UH000000	23	ZW272JU50A500000	26
ZF2X1MEA05000000	38	ZF2X2RL105000000	35	ZQ2K2PU1UH000000	24	ZW272LU50A500000	26
ZF2X1MEG05000000	38	ZF2X2RLG05000000	35	ZQ2K2PU6UH000000	24	ZW272MU50A500000	25
ZF2X1ML105000000	34	ZF2X2SEA05000000	39	ZQ2K2QU1UH000000	23	ZW272PU50A500000	26
ZF2X1MLG05000000	34	ZF2X2SEG05000000	39	ZQ2K2QU6UH000000	23	ZW2727U50A500000	26
ZF2X1PEA05000000	40	ZF2X2SL105000000	35	ZQ2K2RU1UH000000	24	ZW272RU50A500000	26
ZF2X1PEG05000000	40	ZF2X2SLG05000000	35	ZQ2K2RU6UH000000	24	ZW272SU50A500000	26
ZF2X1PL105000000	36	ZF2X2TEA05000000	37	ZQ2K2SU1UH000000	24	ZW272TU50A500000	25
ZF2X1PLG05000000	36	ZF2X2TEG05000000	37	ZQ2K2SU6UH000000	24	ZW272ZU50A500000	25
ZF2X1QEA05000000	38	ZF2X2TL105000000	33	ZQ2K2TU1UH000000	23	ZW272ZU50A500000	26
ZF2X1QEG05000000	38	ZF2X2TLG05000000	33	ZQ2K2TU6UH000000	23	ZW2K22U1UH000000	26
ZF2X1QL105000000	34	ZF2X2UEA05000008	55	ZQ2K2ZU1UH000000	23	ZW2K22U6UH000000	26
ZF2X1QLG05000000	34	ZF2X2UEA05000009	55	ZQ2K2ZU6UH000000	23	ZW2K23U1UH000000	26
ZF2X1REA05000000	40	ZF2X2UEG05000008	55	ZT2222U10B000000	44	ZW2K23U6UH000000	26
ZF2X1REG05000000	40	ZF2X2UEG05000009	55	ZT2222U10B000000	44	ZW2K27U1UH000000	26
ZF2X1RL105000000	36	ZF2X2WEA05000008	55	ZT2223U10B000000	44	ZW2K27U6UH000000	26
ZF2X1RLG05000000	36	ZF2X2WEA05000009	55	ZT2227U10B000000	44	ZW2K28U1UH000000	25
ZF2X1SEA05000000	40	ZF2X2WEG05000008	55	ZT2228U10B000000	42	ZW2K28U6UH000000	25
ZF2X1SEG05000000	40	ZF2X2WEG05000009	55	ZT2229U10B000000	44	ZW2K28U6UH000000	26
ZF2X1SL105000000	36	ZF2X2ZEA05000000	37	ZT222AU10B000000	43	ZW2K29U1UH000000	26
ZF2X1SLG05000000	36	ZF2X2ZEG05000000	37	ZT222CU10B000000	44	ZW2K29U6UH000000	25
ZF2X1TGA05000000	40	ZF2X2ZL105000000	33	ZT222JU10B000000	44	ZW2K2AU6UH000000	25
ZF2X1TGA05000000	40	ZF2X2ZLG05000000	33	ZT222LU10B000000	44	ZW2K2CU1UH000000	26
ZF2X1TGA05000000	40	ZH2X25T102000000	47	ZT222MU10B000000	43	ZW2K2CU6UH000000	26
ZF2X1TLG05000000	36	ZH2X25T102000000	47	ZT222PU10B000000	44	ZW2K2JU1UH000000	26
ZF2X1TGA05000000	38	ZH2X25T105000000	47	ZT222QU10B000000	43	ZW2K2JU6UH000000	26
ZF2X1TGA05000000	38	ZH2X25T107500000	47	ZT222RU10B000000	44	ZW2K2LU1UH000000	26
ZF2X1TGA05000000	38	ZH2X25T10A000000	47	ZT222SU10B000000	44	ZW2K2LU6UH000000	26
ZF2X1TL105000000	34	ZH2X25T10A500000	47	ZT222TU10B000000	43	ZW2K2MU1UH000000	25
ZF2X1TLG05000000	34	ZH2X25TG02000000	47	ZT222ZU10B000000	43	ZW2K2MU6UH000000	25
ZF2X1TEA05000000	38	ZH2X25TG05000000	47	ZT2522U50A000000	44	ZW2K2PU1UH000000	26
ZF2X1TEG05000000	38	ZH2X25TG07500000	47	ZT2523U50A000000	44	ZW2K2PU6UH000000	26
ZF2X1TL105000000	34	ZH2X25TGA000000	47	ZT2527U50A000000	44	ZW2K2QU1UH000000	25
ZF2X1TLG05000000	34	ZH2X25TGA0500000	47	ZT2528U50A000000	43	ZW2K2QU6UH000000	25
ZF2X22EA05000000	39	ZP103IU500000006	56	ZT2529U50A000000	44	ZW2K2RU1UH000000	26
ZF2X22EG05000000	39	ZP103IU500000007	56	ZT252AU50A000000	43	ZW2K2RU6UH000000	26
ZF2X22L105000000	35	ZP103IU500000008	56	ZT252CU50A000000	44	ZW2K2SU1UH000000	26
ZF2X22LG05000000	35	ZP103UU500000009	56	ZT252JU50A000000	44	ZW2K2SU6UH000000	26
ZF2X23EA05000000	39	ZP103WU500000008	56	ZT252LU50A000000	44	ZW2K2TU1UH000000	25
ZF2X23EG05000000	39	ZP103WU500000009	56	ZT252MU50A000000	43	ZW2K2TU6UH000000	25
ZF2X23L105000000	35	ZP153IU100000006	56	ZT252PU50A000000	44	ZW2K2ZU1UH000000	25
ZF2X23LG05000000	35	ZP153IU100000007	56	ZT252QU50A000000	43	ZW2K2ZU6UH000000	25
ZF2X27EA05000000	39	ZP153UU100000008	56	ZT252RU50A000000	44		
ZF2X27EG05000000	39	ZP153UU100000009	56	ZT252SU50A000000	44		
ZF2X27L105000000	35	ZP153WU100000008	56	ZT252TU50A000000	43		
		ZP153WU100000009	56				

En raison de l'évolution technique constante de nos produits, les plans, dessins, photos et caractéristiques repris dans les pages techniques sont communiqués sans engagement et peuvent être modifiés sans préavis



If you are using pressure switches on your devices, many components made by Ultimheat may also be used on them.



Room humidistats
(Catalogue N°8)



Room thermostat for incorporation on mounting boards or inside wall mounting housing (Catalogue N°2)



Waterproof silicone caps for sensors and wires output (Catalogue N°2)



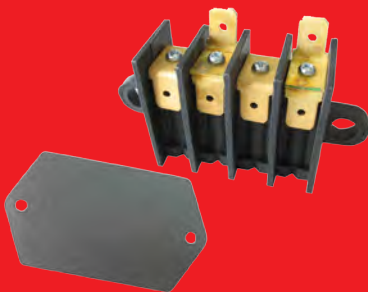
Humidistats for incorporation for humidifiers and dehumidifiers (catalogue N°8)



Freeze detection fixed setting thermostats for incorporation (catalogue N°3)



Vertical level switches (Catalogue N°7)



Connection blocks made on customer specs (Catalogue N°10)





Stroke or paddle flow switches (catalogue N°6)



Radiant and convection room temperature sensors (catalogue N°3)

Other catalogues

 **ULTIMHEAT** ¹




ELECTROMECHANICAL AND ELECTRONIC THERMOSTATS RANGE
for incorporation


For these thermostats incorporated inside various boxes, housing and cabinets: See catalogues N°2 and 3
Explosion proof versions: See catalogue N°4

The professional solution: an extended, rational, and consistent range of products

Technical catalogue for R&D department
Edition 15/11/2012

E-Mail: info@ultimheat.com Web: www.ultimheat.com

 **ULTIMHEAT** ²



THERMOSTATS WITH INGRESS PROTECTION HOUSINGS
and connection boxes for heating elements

The professional solution: an extended, rational, and consistent range of products

Technical catalogue for R&D department
Edition 15/11/2012

E-Mail: info@ultimheat.com Web: www.ultimheat.com

 **ULTIMHEAT** ³



INDUSTRIAL ELECTRONIC AND THERMOSTAT CONTROLS
electronic controllers, thermostatic control boxes, sub-assemblies and accessories for temperature control in electro-thermal equipment Y6-Y7-Y8 series

For:
Heat tracing, immersion heaters, Air heaters, Flexible surface heating elements, HVAC

The professional solution: an extended, rational, and consistent range of products

Technical catalogue for R&D department
Edition 15/11/2012

E-Mail: info@ultimheat.com Web: www.ultimheat.com

 **ULTIMHEAT** ⁴



EXPLOSION PROOF THERMOSTATS
Types Y9

For industrial and high and applications in non-hazardous area: See our catalogue 3
For standard applications with ingress protection housing, in non-hazardous area: see our catalogue 2
For incorporation in non-hazardous area see our catalogue 1

The professional solution: an extended, rational, and consistent range of products

Technical catalogue for R&D department
Edition 15/11/2012

E-Mail: info@ultimheat.com Web: www.ultimheat.com

 **ULTIMHEAT** ⁶





FLOW SWITCHES AND COMBINATION CONTROLS

The professional solution: an extended, rational, and consistent range of products

Technical catalogue for R&D department
Edition 15/11/2012

E-Mail: info@ultimheat.com Web: www.ultimheat.com

 **ULTIMHEAT** ⁷




FLOAT LEVEL SWITCHES
Vertical and horizontal models
For OEM applications

The professional solution: an extended, rational, and consistent range of products

Technical catalogue for R&D department
Edition 15/11/2012

E-Mail: info@ultimheat.com Web: www.ultimheat.com

 **ULTIMHEAT** ⁸



HUMIDISTATS
and Electronic humidity controls

The professional solution: an extended, rational, and consistent range of products

Technical catalogue for R&D department
Edition 15/11/2012

E-Mail: info@ultimheat.com Web: www.ultimheat.com

 **ULTIMHEAT** ⁹





FIRE DETECTION FUSIBLE LINKS
A fusible link is a mechanical part that breaks at a preset temperature, they are used in fire detection system to open or close door, dampers, vents etc..., if ambient temperature rise upon a certain value.

The professional solution: an extended, rational, and consistent range of products

Technical catalogue for R&D department
Edition 15/11/2012

E-Mail: info@ultimheat.com Web: www.ultimheat.com

 **ULTIMHEAT** ¹⁰



CERAMIC CONNECTION BLOCKS
and Special connectors

The professional solution: an extended, rational, and consistent range of products

Technical catalogue for R&D department
Edition 15/11/2012

E-Mail: info@ultimheat.com Web: www.ultimheat.com

E-Mail : info@ultimheat.com Web: www.ultimheat.com

Distributor: